



BOCCHI®

COMFORT & CARE COLLECTION



BOCCHI®

COMFORT & CARE COLLECTION

BOCCHI

Bocchi, with 67 years of experience, is a leading brand in kitchen and bathroom products industry. Since its establishment in 1950, the values of Bocchi have never changed: creative and innovative excellence at every level, as well as care for people and for the environment.

Bocchi's mission has always been to offer its partners innovative, high quality and creative solutions in products and services to provide a unique and valued experience.

Today, Bocchi harmoniously brings together tradition and design and proudly stands for quality, durability and care.

For over half a century, Bocchi has been identifying the needs of the elderly and physically challenged and has been offering new solutions in light of its experience. Bocchi's Comfort & Care Collection provides practical, innovative, and technological solutions to problems faced in bathrooms by elderly and physically challenged people.

The suitable, easily accessible product range come in a style and exclusive color range that will free life from barriers.



Index

Grab Bars

Soft-Touch Grab Bars **6-7**

| | |
|---|----|
| Straight Grab Bars | 12 |
| 90° Wall-to-Floor Grab Bar with Support Leg | 13 |
| 135° Grab Bar | 14 |
| 90° Corner Grab Bar | 15 |
| L-Shape Grab Bar | 16 |
| Swing-Up Grab Bar with Locking Mechanism | 17 |

Matte Stainless Steel Grab Bars **18-21**

| | |
|---|----|
| Straight Grab Bars | 22 |
| 90° Wall-to-Floor Grab Bar with Support Leg | 23 |
| 135° Grab Bar | 24 |
| 90° Corner Grab Bar | 25 |
| L-Shape Grab Bar | 26 |
| Swing-Up Grab Bar with Locking Mechanism | 27 |

Shower Seats **28-29**

| | |
|--|----|
| Soft-Touch Folding Shower Seat | 30 |
| Solid Phenolic Folding Shower / Dressing Area Seat | 31 |

Warranty & Care **32**



GRAB BARS

The bathroom is transformed into a living space with Bocchi Grab Bars.

Bocchi Soft-Touch and Matte Stainless Steel Grab Bars provide safety, comfort and style thanks to their lean yet colorful design options that comply with Americans with Disabilities Act (ADA) specifications.



SOFT-TOUCH GRAB BARS



FUNCTIONALITY & SAFETY IN THE BATHROOM

The smooth, matte finish of Soft-Touch Grab Bars transforms the handicap accessible bathroom from the ordinary institutional look to a colorful, exciting atmosphere.

Soft-Touch Grab Bars have bacteria-resistant surfaces, which adds increased hygiene when using the toilet area. Their scratch resistant surfaces ensure a long-lasting hygiene while adding to the durability of the bars.

The use of Soft-Touch Grab Bars greatly improves the safety when using the bathtub. Non-slip surface is required since users' hands are wet when grabbing.

SOFTNESS OF VELVET

Soft-Touch Grab Bars have a special coating that will give you a velvet-like touch and feel. This will provide a much more comfortable feel as compared to conventional metal grab bars

WARM TOUCH

When your hand touches a traditional metallic bar's surface, the metal pulls the heat away from your body and the perception is cold. On the contrary, specially coated Soft-Touch technology reflects the heat from your hand thus your body perceives it to be warm.

SUPERIOR GRIP & NON-SLIP SURFACE

Special soft surface coating allows the best grip with the least effort even when hands are wet.

HYGIENIC

Soft-Touch Grab Bars provide hygiene by preventing the growth of bacteria and mildew on its surface, helping avoid the creation of undesired odors or stains.

NO-RUST & NO-SCRATCH

Even the highest quality stainless steel will undergo oxidation over time. A once brilliant finish will fade. Thanks to its special coating the Soft-Touch Grab Bars don't rust, keeping its like-new look for years.

COLORFUL

Bocchi offers 3 different colors for you to personalize Soft-Touch Grab Bars with your favorite color. Say goodbye to dull bathrooms.

SOFT-TOUCH STRAIGHT GRAB BAR



TBST-001-10XX



TBST-005-10XX

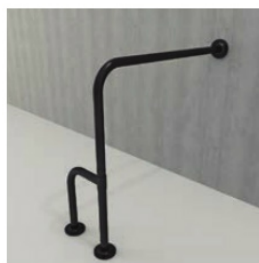


TBST-012-10XX

SOFT-TOUCH 90° WALL-TO-FLOOR GRAB BAR WITH SUPPORT LEG



TBST-001-1190



TBST-005-1190



TBST-012-1190

SOFT-TOUCH 135° GRAB BAR



TBST-001-1135



TBST-005-1135

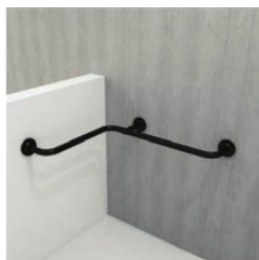


TBST-012-1135

SOFT-TOUCH 90° CORNER GRAB BAR



TBST-001-1090



TBST-005-1090



TBST-012-1090

SOFT-TOUCH L-SHAPE GRAB BAR



TBST-001-0090



TBST-005-0090



TBST-012-0090

SOFT-TOUCH SWING-UP GRAB BAR



TBST-001-1210



TBST-005-1210



TBST-012-1210

SOFT-TOUCH STRAIGHT GRAB BARS



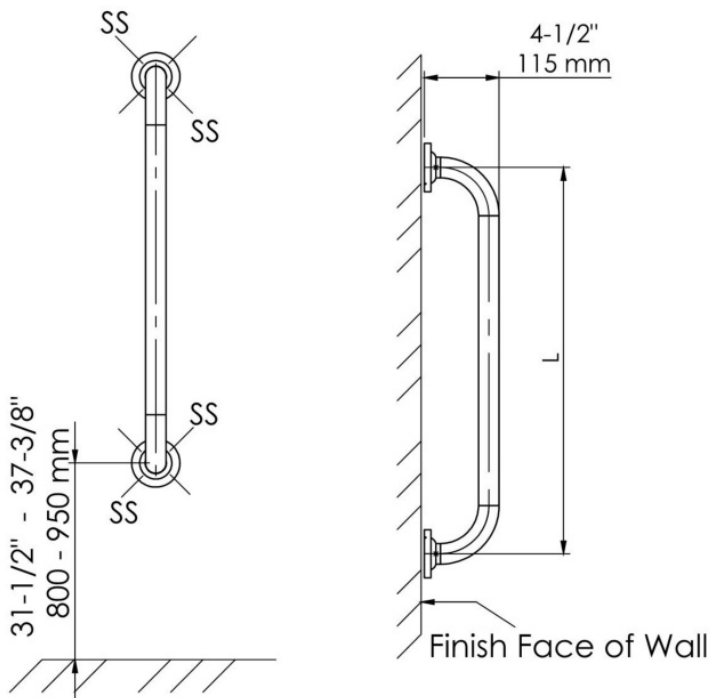
TBST-001-10XX



TBST-005-10XX



TBST-012-10XX

**Features**

Soft-touch bacteria-resistant straight grab bar made of seamless grade 304 stainless steel, with hidden flange caps. Matte soft-touch finish gives velvety feel and warmth. 3 different color options.

Dimensions and Codes

| | |
|-----|---------------|
| 12" | TBST-XXX-1030 |
| 16" | TBST-XXX-1040 |
| 20" | TBST-XXX-1050 |
| 24" | TBST-XXX-1060 |
| 36" | TBST-XXX-1290 |
| 48" | TBST-XXX-1120 |
| 60" | TBST-XXX-1150 |

Colors

White (001), Black (005), Orange (012)

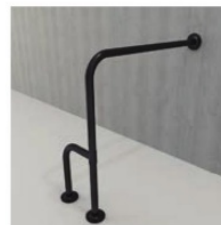
Standards

ASTM F 446-85 / ICC A117.1-2009

SOFT-TOUCH 90° WALL-TO-FLOOR GRAB BAR WITH SUPPORT LEG



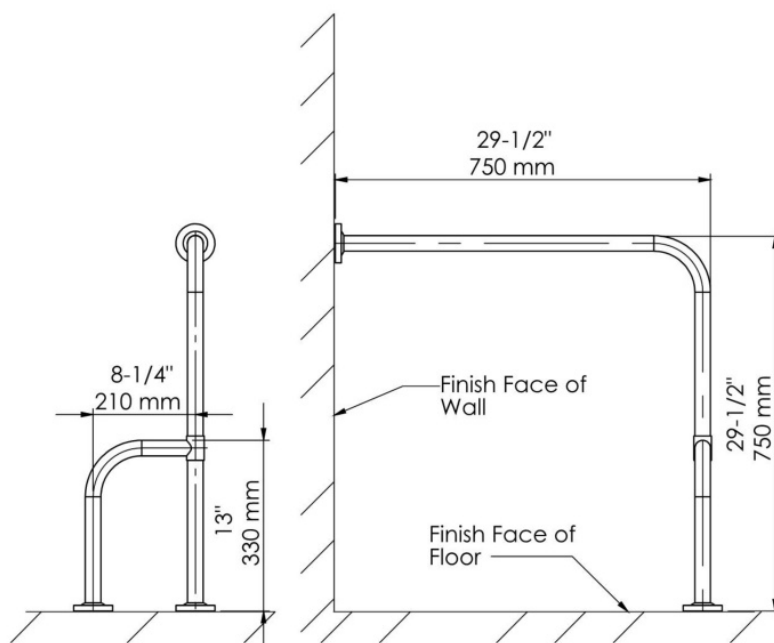
TBST-001-1190



TBST-005-1190



TBST-012-1190

**Features**

Soft-touch bacteria-resistant wall-to-floor grab bar made of seamless grade 304 stainless steel, with hidden flange caps. Matte soft-touch finish gives velvety feel and warmth. 3 different color options.

Dimensions and Codes

TBST-XXX-I 190

Colors

White (001), Black (005), Orange (012)

Standards

ASTM F 446-85 / ICC A117.1-2009

SOFT-TOUCH 135° GRAB BAR



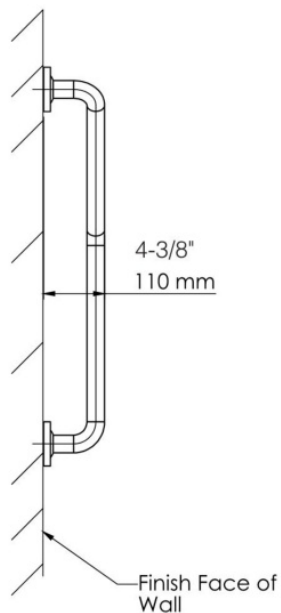
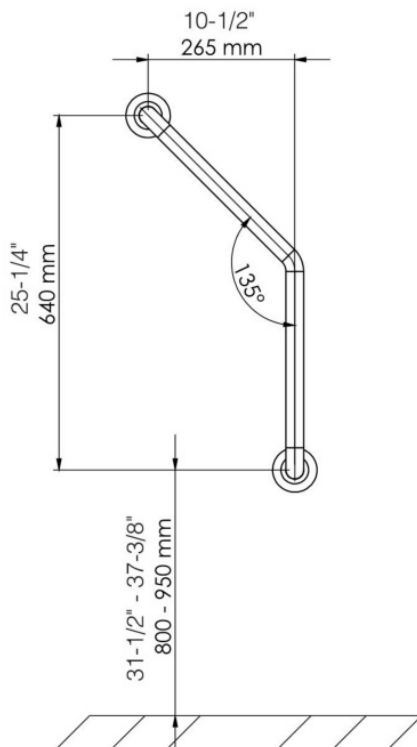
TBST-001-1135



TBST-005-1135



TBST-012-1135

**Features**

Soft-touch bacteria-resistant 135° grab bar made of seamless grade 304 stainless steel, with hidden flange caps. Matte soft-touch finish gives velvety feel and warmth. 3 different color options.

Dimensions and Codes

TBST-XXX-1135

Colors

White (001), Black (005), Orange (012)

Standards

ASTM F 446-85

SOFT-TOUCH 90° CORNER GRAB BAR



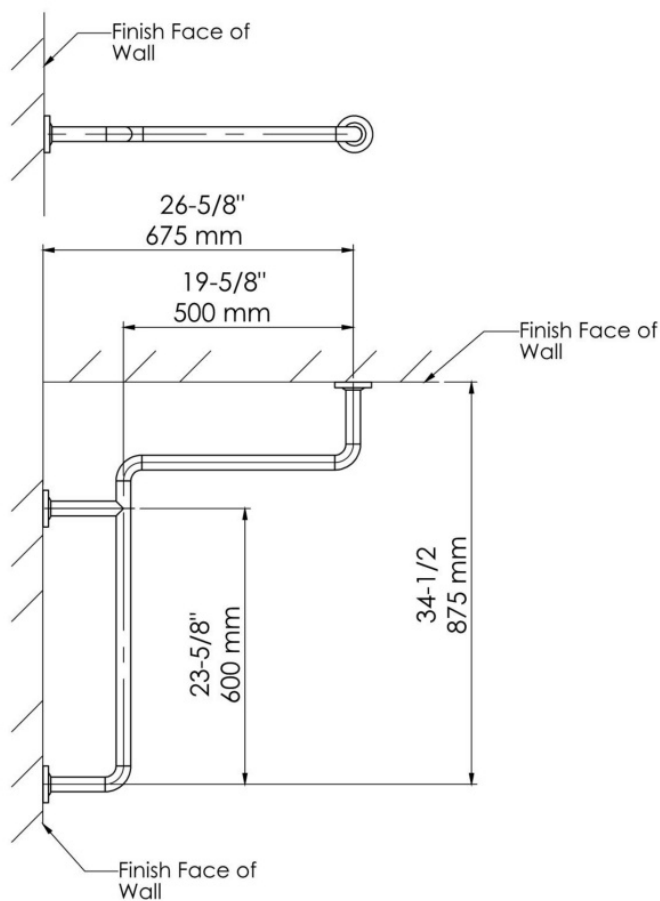
TBST-001-1090



TBST-005-1090



TBST-012-1090

**Features**

Soft-touch bacteria-resistant 90° grab bar made of seamless grade 304 stainless steel, with hidden flange caps. Matte soft-touch finish gives velvety feel and warmth. 3 different color options.

Dimensions and Codes

TBST-XXX-1090

Colors

White (001), Black (005), Orange (012)

Standards

ASTM F 446-85

SOFT-TOUCH SWING-UP GRAB BAR WITH LOCKING MECHANISM



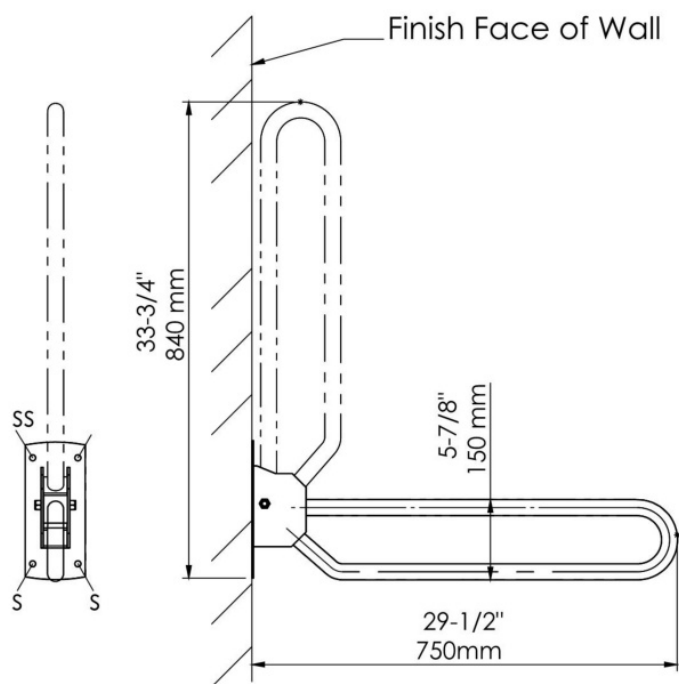
TBST-001-1210



TBST-005-1210



TBST-012-1210



Features

Soft-touch bacteria-resistant swing up grab bar made of seamless grade 304 stainless steel, with hidden flange caps. Features locking mechanism for safety and security of use. Matte soft-touch finish gives velvety feel and warmth. 3 different color options.

Dimensions and Codes

TBST-XXX-1210

Colors

White (001), Black (005), Orange (012)

Standards

ASTM F 446-85 / ICC A117.1-2009
except for section 609.2.2

MATTE STAINLESS STEEL GRAB BARS



NATURAL & SEAMLESS

The natural material choice for grab bars is plain stainless steel with seamless satin finish which offers extremely hygienic, easy to clean and durable surface.



MATTE STRAIGHT GRAB BAR



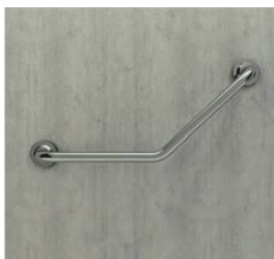
TBPC-101-10X0

MATTE 90° WALL-TO-FLOOR GRAB BAR WITH SUPPORT LEG



TBPC-XXX-1190

MATTE 135° GRAB BAR



TBPC-XXX-1135

MATTE 90° CORNER GRAB BAR



TBPC-XXX-1090

MATTE L-SHAPE GRAB BAR



TBPC-101-0090

MATTE SWING-UP GRAB BAR

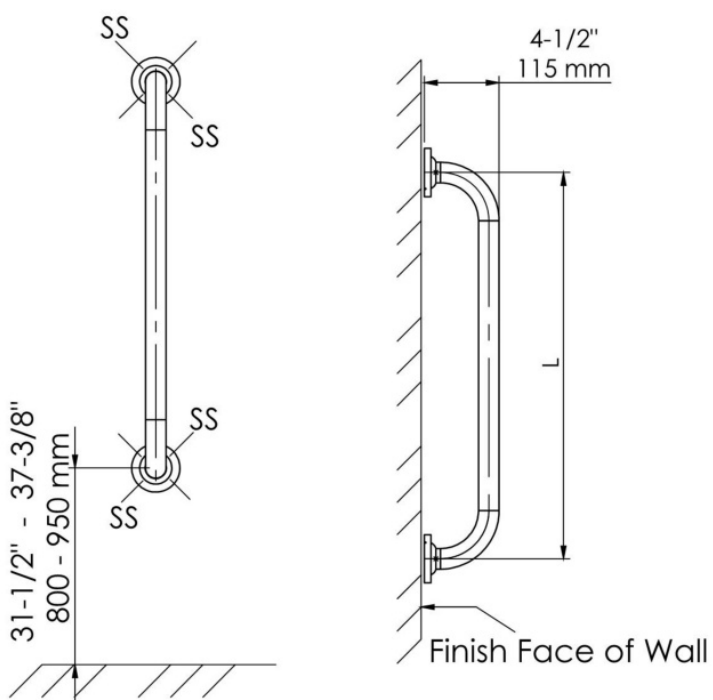


TBPC-XXX-1210

MATTE STRAGHT GRAB BAR



TBPC-101-10XX



Features

Stainless Steel straight grab bar made of seamless grade 304 stainless steel, with satin finish and hidden flange caps.

Dimensions and Codes

| | |
|-----|---------------|
| 12" | TBPC-XXX-1030 |
| 16" | TBPC-XXX-1040 |
| 20" | TBPC-XXX-1050 |
| 24" | TBPC-XXX-1060 |
| 36" | TBPC-XXX-1290 |
| 48" | TBPC-XXX-1120 |
| 60" | TBPC-XXX-1150 |

Colors

Satin (101)

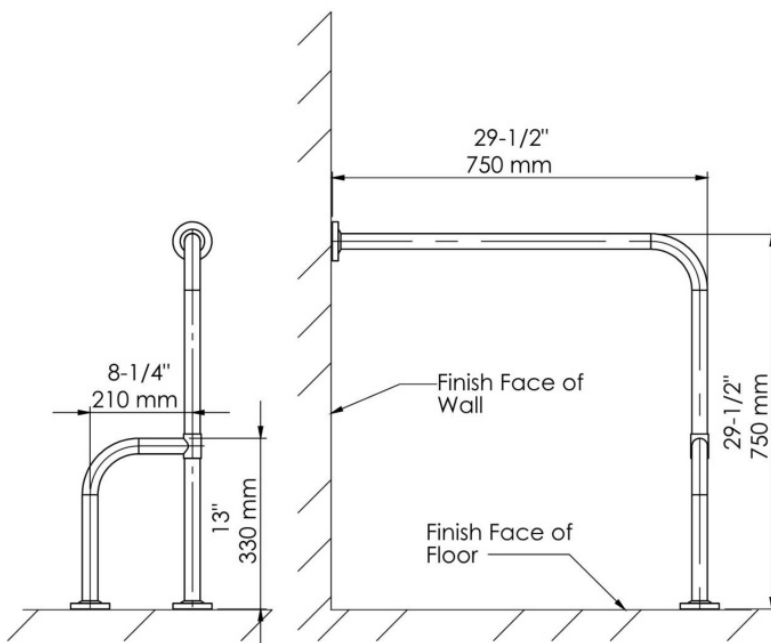
Standards

ASTM F 446-85 / ICC A117.1-2009

MATTE 90° WALL-TO-FLOOR GRAB BAR WITH SUPPORT LEG



TBPC-XXX-1190



Features

Stainless Steel wall-to-floor grab bar made of seamless grade 304 stainless steel, with satin finish and hidden flange caps.

Dimensions and Codes

TBPC-XXX-1190

Colors

Satin (101)

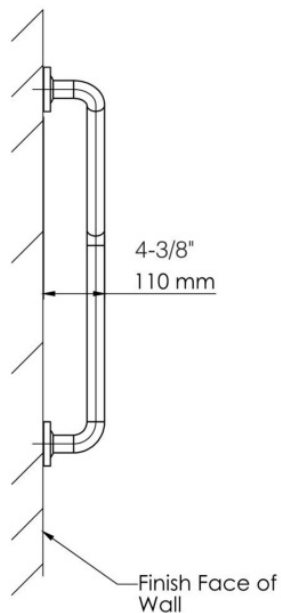
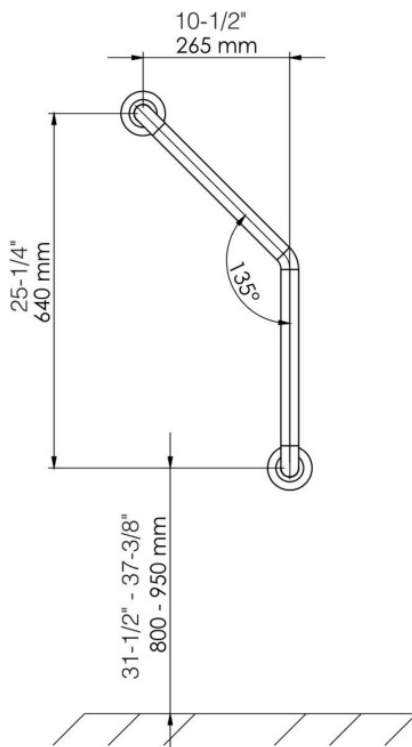
Standards

ASTM F 446-85 / ICC A117.1-2009

MATTE 135° GRAB BAR



TBPC-XXX-1135

**Features**

Stainless Steel 135° grab bar made of seamless grade 304 stainless steel, with satin finish and hidden flange caps.

Dimensions and Codes

TBPC-XXX-1135

Colors

Satin (101)

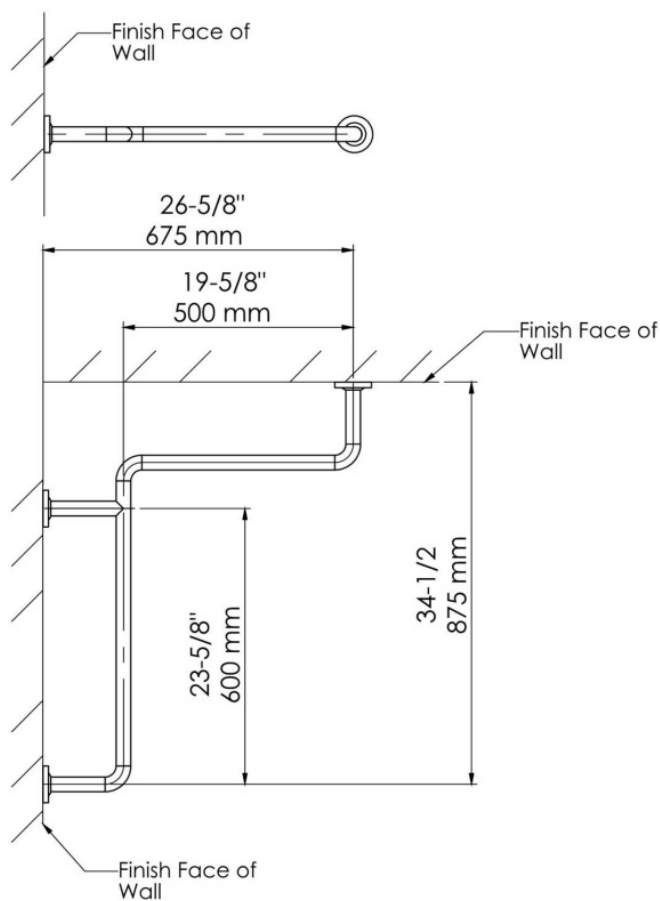
Standards

ASTM F 446-85

MATTE 90° CORNER GRAB BAR



TBPC-XXX-1090

**Features**

Stainless Steel 90° grab bar made of seamless grade 304 stainless steel, with satin finish and hidden flange caps.

Dimensions and Codes

TBPC-XXX-1090

Colors

Satin (101)

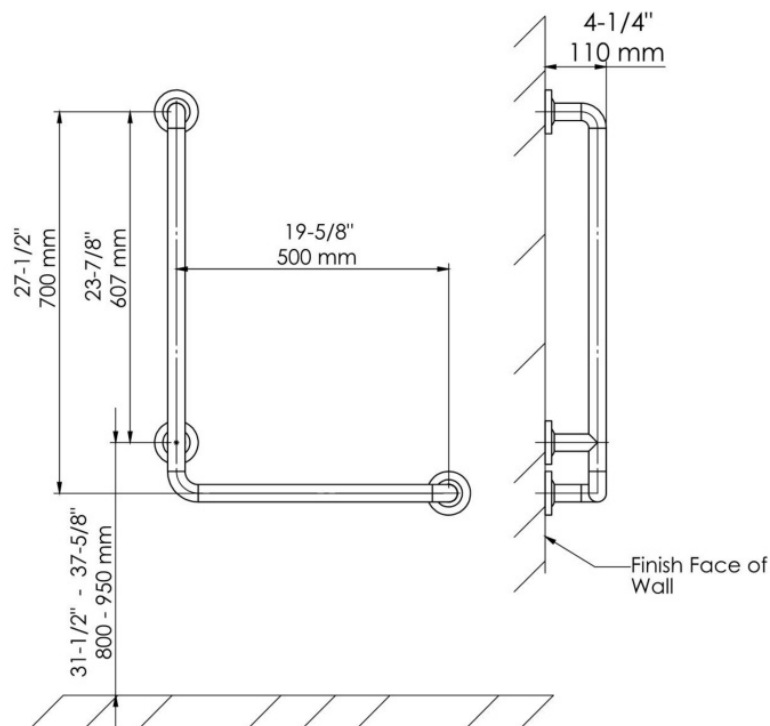
Standards

ASTM F 446-85

MATTE L-SHAPE GRAB BAR



TBPC-101-0090



Features

Stainless Steel L-shape grab bar made of seamless grade 304 stainless steel, with satin finish and hidden flange caps.

Dimensions and Codes

TBPC-XXX-0090

Colors

Satin (101)

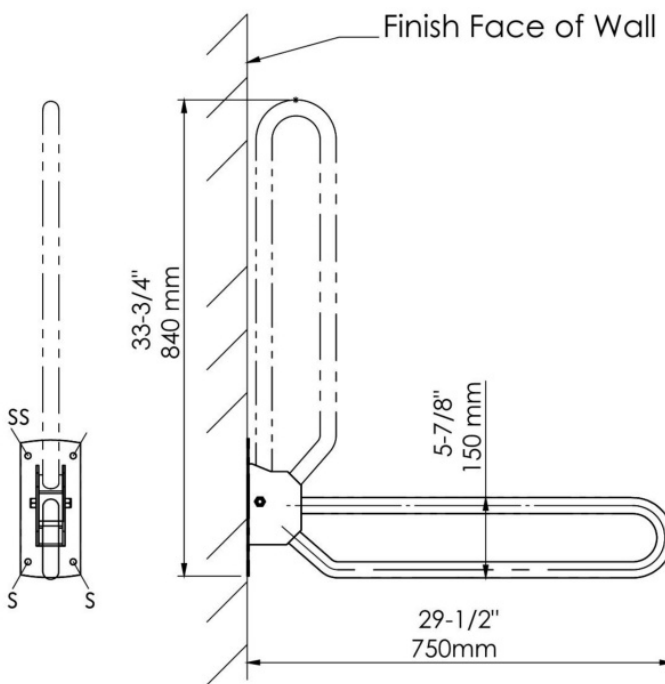
Standards

ASTM F 446-85

MATTE SWING-UP GRAB BAR



TBPC-XXX-1210



Features

Stainless Steel swing up grab bar made of seamless grade 304 stainless steel, with satin finish and hidden flange caps. Features locking mechanism.

Dimensions and Codes

TBPC-XXX-1210

Colors

Satin (101)

Standards

ASTM F 446-85 / ICC A117.1-2009
except for section 609.2.2

SHOWER SEATS



SAFETY & FUNCTIONALITY

Being a completely wet area, showers are where safety and functionality matters the most in a bathroom.

Shower seats complete the functionality of a shower tray designed for elderly and physically challenged people.

Comfort shower seat with large seating space helps to create a pleasant, easy and safe shower experience. The seat can be folded up to save precious space when not needed or during cleaning.

SOFT-TOUCH SHOWER SEAT

30



3058-0001



3058-0002

SOLID PHENOLIC FOLDING SHOWER/ DRESSING AREA SEAT

31



TBDO-101-1004



TBDO-101-1005

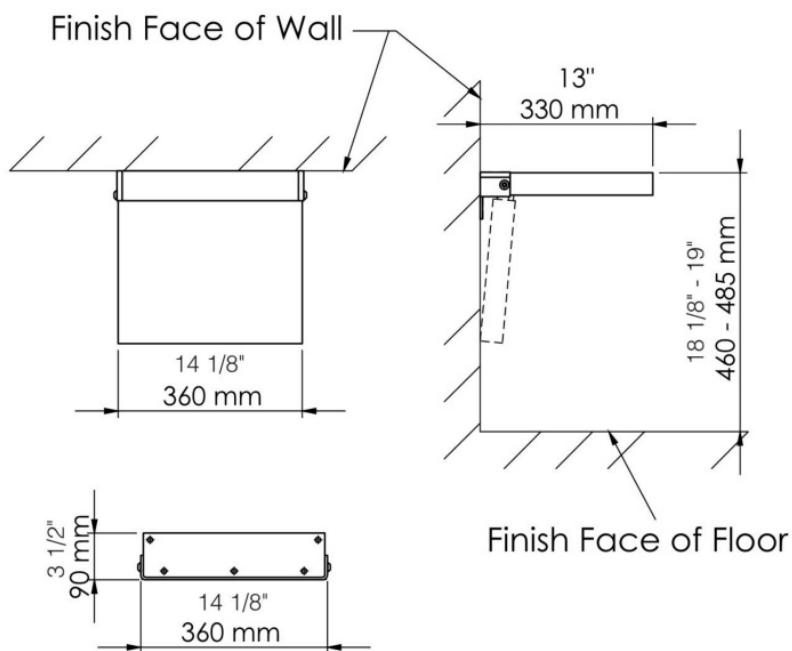
SOFT-TOUCH SHOWER SEAT



3058-0001



3058-0002

**Features**

The special Soft-Touch, smooth and anti-slip surface material of this shower seat provides user with extra comfort. The 440 lbs maximum load capacity of this shower seat sets it apart from the competition.

Dimensions and Codes

3058-XXXX

Colors

White (0001), Black (0002)

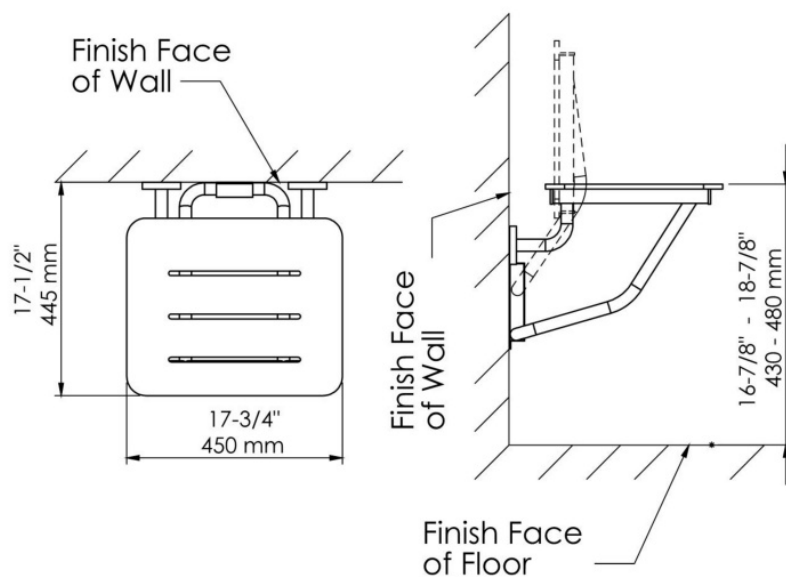
SOLID PHENOLIC FOLDING SHOWER / DRESSING AREA SEAT



TBDO-101-1004



TBDO-101-1005

**Features**

This easy to clean solid phenolic folding shower and dressing area seat with stainless steel frame construction provides the user with extra comfort. Maximum load capacity is 440 lbs.

Dimensions and Codes

TBDO-101-XXXX

Colors

White phenolic (1004), Oak phenolic (1005)

WARRANTY & CARE

Thank You for Choosing Bocchi

Thank you for choosing Bocchi. By doing so, you will enjoy the outstanding quality and durability of your new Bocchi product for many years to come.

All information in this guide is based upon the latest product information available at the time of publication. At Bocchi, we strive to fulfill our mission of improving the level of luxurious living for each person who is touched by our products and services. We reserve the right to make changes in product characteristics, packaging, or availability at any time without notice.

Please take a few minutes to review this guide. Pay special attention to the care and cleaning instructions.

GRAB BARS LIFETIME LIMITED WARRANTY

Bocchi warrants its grab bars to be free of defects in material and workmanship during normal residential use for as long as the original consumer purchaser owns his or her home. Gloss reduction, scratching, staining and acid or alkaline etching of the finish over time due to use, cleaning practices or water or atmospheric conditions, are not manufacturing defects but are indicative of normal wear and tear. This warranty applies only to Bocchi grab bars installed in the United States of America, Canada or Mexico. If a defect is found in normal residential use, Bocchi will, at its election, repair, replace or make appropriate adjustment. Damage caused by accident, misuse, or abuse, such as dents and scratches after installation, is not covered by this warranty. Improper installation, care and cleaning will void the warranty. Proof of purchase (original sales receipt) must be provided to Bocchi with all warranty

claims. Bocchi is not responsible for labor charges, installation, or other incidental or consequential costs. In no event shall the liability of Bocchi exceed the purchase price of the product. If the grab bar is used commercially or is installed outside of North America, Bocchi Co. warrants the fireclay sink to be free from defects in material and workmanship for one (1) year from the date the product is installed, with all other terms of this warranty applying except duration. All other components other than the grab bar carry Bocchi's one-year limited warranty unless otherwise specified.

SHOWER SEAT THREE-YEAR LIMITED WARRANTY

Bocchi warrants all aspects of the Shower Seat, to be free of defects in material and workmanship during normal residential use for as long as the original consumer purchaser owns his or her home. This warranty applies only to Bocchi shower seats installed in North America. If a defect is found in normal residential use, Bocchi will, at its election, repair, provide a replacement part or product, or make appropriate adjustment. Damage to a product caused by accident, misuse, or abuse is not covered by this warranty. Improper installation, care and cleaning will void the warranty*.

Bocchi is not responsible for labor charges, installation, or other incidental or consequential costs. In no event shall the liability of Bocchi exceed the purchase price of the Shower Seat.

To obtain warranty service contact Bocchi either through your Dealer, Plumbing Contractor, Home Center or E-tailer, or by writing Bocchi Co., Attn.: Customer Care Center, 11350 Old Roswell Rd. Ste 600 Alpharetta, GA 30009, USA. Please be sure to provide all pertinent information regarding your claim, including a complete description of the

problem, the product, model number, color, finish, the date the product was purchased and from whom the product was purchased. Also include your original invoice.

IMPLIED WARRANTIES INCLUDING THAT OF MERCHANTABILITY AND FITNESS FOR A PARTICULAR PURPOSE ARE EXPRESSLY LIMITED IN DURATION TO THE DURATION OF THIS Bocchi AND/OR SELLER DISCLAIM ANY LIABILITY FOR SPECIAL, INCIDENTAL OR CONSEQUENTIAL DAMAGES.

Some states/provinces do not allow limitations on how long an implied warranty lasts, or the exclusion or limitation of special, incidental or consequential damages, so these limitations and exclusions may not apply to you. This warranty gives you specific legal rights. You may also have other rights which vary from state/province to state/province. This warranty is to the original consumer purchaser only, and excludes product damage due to installation error, product abuse, or product misuse, whether performed by a contractor, Service Company or the consumer. This is Bocchi's exclusive written warranty.

General Care and Cleaning Tips for Bocchi Products

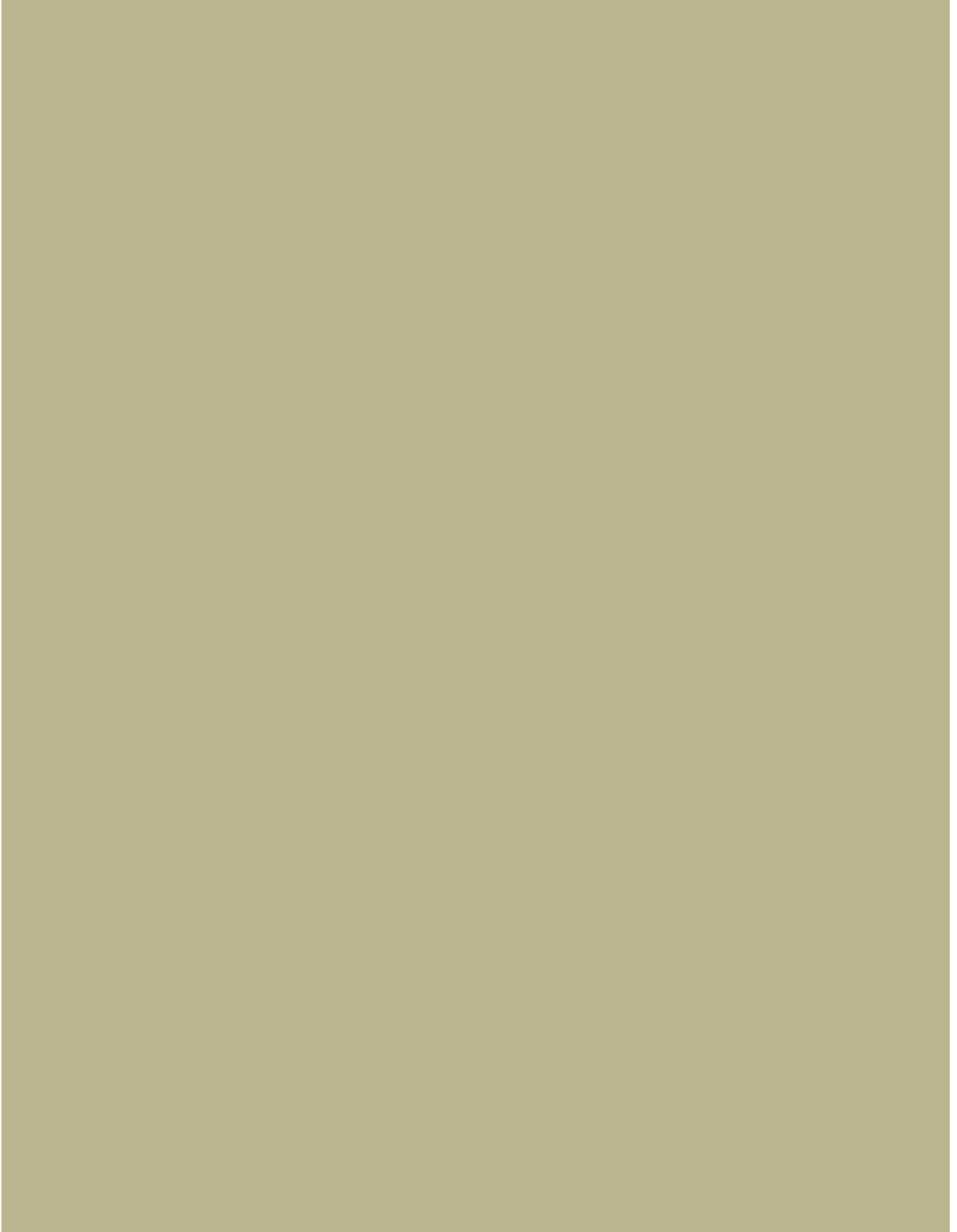
For best results, keep the following in mind when caring for your new product:

Always test your cleaning solution on an inconspicuous area before applying to the entire surface.

Wipe surfaces clean and rinse completely with water immediately after applying cleaner. Rinse and dry any overspray that lands on nearby surfaces.

Do not allow cleaners to soak on surfaces.

Use a soft, dampened sponge or cloth. Never use an abrasive material such as a brush or scouring pad to clean surfaces.



BOCCHI USA

11350 Old Roswell Rd. STE. 600
Alpharetta, GA 30009

T. 877-565-2221
T. 678-878-3771
F. 678-867-6763

info@bocchiusa.com



www.bocchiusa.com

01.2019
USA

SOFT-TOUCH L-SHAPE GRAB BAR



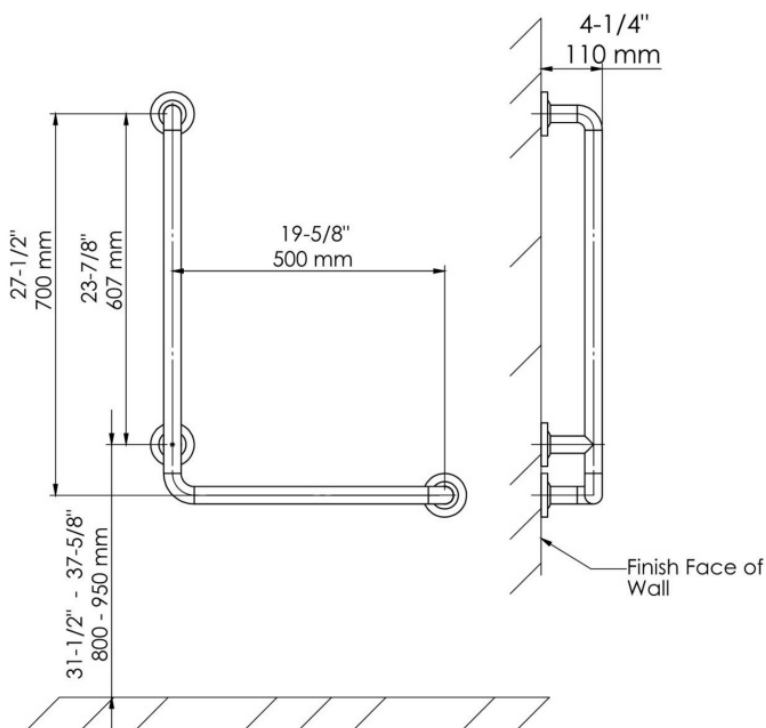
TBST-001-0090



TBST-005-0090



TBST-012-0090

**Features**

Soft-touch bacteria-resistant L-shape grab bar made of seamless grade 304 stainless steel, with hidden flange caps. Matte soft-touch finish gives velvety feel and warmth. 3 different color options.

Dimensions and Codes

TBST-XXX-0090

Colors

White (001), Black (005), Orange (012)

Standards

ASTM F 446-85